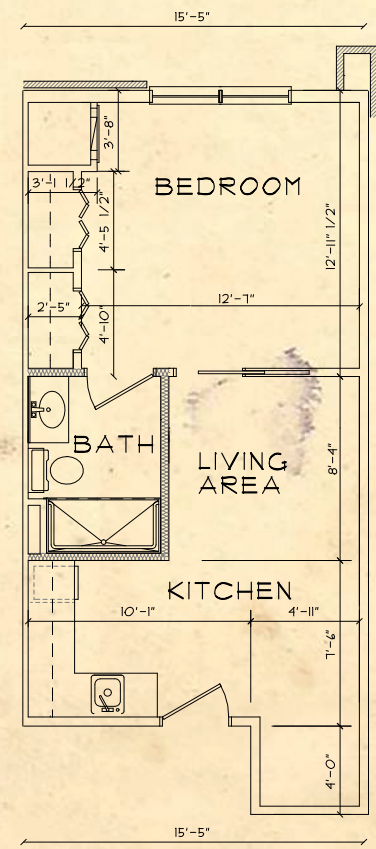
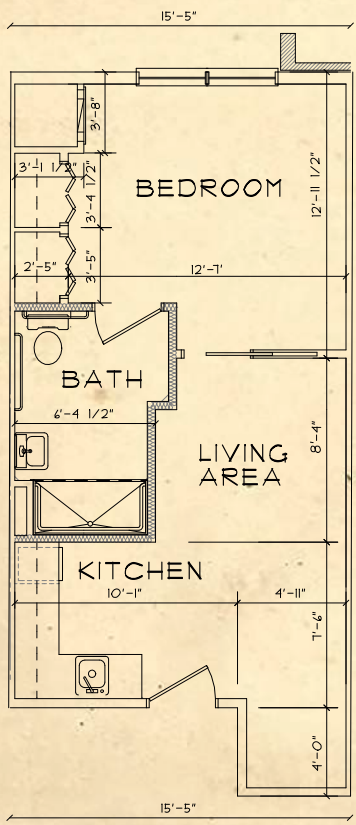


# ASSISTED LIVING UNITS



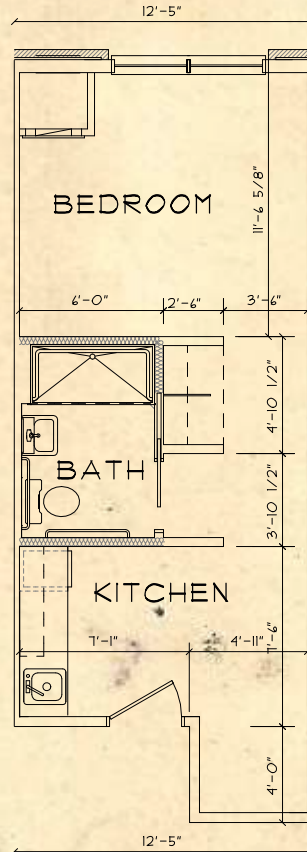
**CONCH** | 1BR - 1BA | 465 Sq. Ft.

**CALICO** | 1BR - 1BA | 465 Sq. Ft.





**COCKLE** | 1 BR - 1 BA | 366 Sq. Ft.



**BAY PORT**  
OF FORT WALTON BEACH

[www.BayPortFortWaltonBeach.com](http://www.BayPortFortWaltonBeach.com)